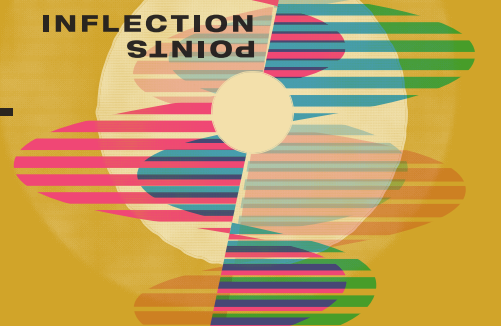


ALTA44



THE AMERICAN
LITERARY
TRANSLATORS
ASSOCIATION

ALTA44: Inflection Points— In-Person Conference



Please wear your conference name badge at all times. Visit the conference check-in table in the hotel foyer with questions or requests for disability-related accommodations.

Scan this QR code to access the full ALTA44 conference program book as a PDF.



Thursday, November 11

4:00—7:00pm MT
Check-in & Informal Gathering (FOYER, ATRIUM, & TERRACE)

4:00—7:00pm MT
Family Room (COPPER ROOM)

4:00—7:00pm MT
Lactation Room (ROOM 220, SECOND FLOOR)

4:00—7:00pm MT
BIPOC Literary Translators Caucus Room (CANYON A)

→**Reading** 8:00—9:00pm MT
Offsite: Reading by the BIPOC Literary Translators Caucus (SKY BAR TUCSON, 536 N 4TH AVE, TUCSON, AZ 85705)

Friday, November 12

8:00am—5:00pm MT
Check-in Table Open (FOYER)

8:00am—5:00pm MT
Family Room (COPPER ROOM)

8:00am—5:00pm MT
Lactation Room (ROOM 220, SECOND FLOOR)

8:00am—5:00pm MT
BIPOC Literary Translators Caucus Room (CANYON A)

→**Seminar** 9:00—10:15am MT
Editing Translations, Part 1 (SABINO)

→**Seminar** 9:00—10:15am MT
Say Translation Is...?, Part 1 (PIMA)

→**Seminar** 9:00—10:15am MT
Situated Understanding: Practices and Provocations for “Thickening” Translation, Part 1 (MADERA)

→**Roundtable** 9:00—10:15am MT
How Can Translation be Taught in the Post-Pandemic Age?, Part 1 (CANYON B—C)

→**Roundtable** 9:00—10:15am MT
What’s Important for Translators of Poetry to Know When Acquiring Rights?, Part 1 (VENTANA)

10:15—10:45AM MT: BREAK

→**Roundtable** 10:45am—12:00pm MT
Both Here and There: Multilingualism and Exophonic Translation, Part 1 (SABINO)

→**Roundtable** 10:45am—12:00pm MT
What are the Most Effective Ways to Promote and Publicize Translations?, Part 1 (PIMA)

→**Seminar** 10:45am—12:00pm MT
Slam It!: What Do We Shake Up and Set Loose by Slamming a Translation?, Part 1 (MADERA)

→**Roundtable** 10:45am—12:00pm MT
How has Literary Translation Shaped the Construction of “The Nordic”?, Part 1 (CANYON B—C)

— Friday, November 12, continued

→**Special Event** 12:00—2:00pm MT

Offsite: Open House at the University of Arizona Poetry Center (1508 E. HELEN STREET, TUCSON, AZ 85721)
Guided groups will be departing from the Marriott lobby at 12:15pm MT and 12:30pm MT.

12:00—3:00pm MT

Office Hours with Ombuds Caitlan Hendrickson
(WEDDING SHOWROOM)

→**Reading** 2:00—3:00pm MT

Annual Bilingual Reading Series: Multigenre Potpourri, hosted by Gary Racz (CANYON B—C)

→**Special Event** 3:15—3:30pm MT

Welcome and Remarks from ALTA's President and Vice President (SABINO—PIMA—MADERA)
Free & Open to the Public

→**Special Event** 3:30—5:00pm MT

Keynote Address: Ofelia Zepeda
(SABINO—PIMA—MADERA)
Free & Open to the Public

→**Special Event** 5:00—6:00pm MT

Keynote Discussion Tables (SABINO—PIMA—MADERA)
Free & Open to the Public

→**Special Event** 7:30—9:30pm MT

Offsite: Before the German's Here: A Staged Reading and Talkback Performed at the Scoundrel & Scamp Theatre (THE SCOUNDREL & SCAMP THEATRE, THE HISTORIC Y, 738 N 5TH AVE, TUCSON, AZ 85705)

Saturday, November 13

8:00am—5:00pm MT

Check-in Table Open (FOYER)

8:00am—5:00pm MT

Family Room (COPPER ROOM)

8:00am—5:00pm MT

Lactation Room (ROOM 220, SECOND FLOOR)

8:00am—5:00pm MT

BIPOC Literary Translators Caucus Room
(CANYON A)

→**Seminar** 9:00—10:15am MT

Editing Translations, Part 2 (SABINO)

→**Seminar** 9:00—10:15am MT

Say Translation Is...?, Part 2 (PIMA)

→**Seminar** 9:00—10:15am MT

Situated Understanding: Practices and Provocations for "Thickening" Translation, Part 2
(MADERA)

→**Roundtable** 9:00—10:15am MT

How Can Translation be Taught in the Post-Pandemic Age?, Part 2 (CANYON B—C)

→**Roundtable** 9:00—10:15am MT

What's Important for Translators of Poetry to Know When Acquiring Rights?, Part 2 (VENTANA)

10:15—10:45AM PT: BREAK

→**Roundtable** 10:45am—12:00pm MT

Both Here and There: Multilingualism and Exophonic Translation, Part 2 (SABINO)

→**Roundtable** 10:45am—12:00pm MT

What are the Most Effective Ways to Promote and Publicize Translations?, Part 2 (PIMA)

→**Seminar** 10:45am—12:00pm MT

Slam It!: What Do We Shake Up and Set Loose by Slamming a Translation?, Part 2 (MADERA)

→**Roundtable** 10:45am—12:00pm MT

How has Literary Translation Shaped the Construction of "The Nordic"?, Part 2
(CANYON B—C)

12:00—2:00pm MT

Office Hours with Ombuds Caitlan Hendrickson
(WEDDING SHOWROOM)

→**Reading** 2:00—3:30pm MT

Annual Bilingual Reading Series: Café Latino, hosted by Gary Racz (MADERA)

4:00—5:00pm MT

Office Hours with Ombuds Caitlan Hendrickson (WEDDING SHOWROOM)

→**Special Event** 4:00—5:00pm MT

Coffee Hour with the ALTA—University of Arizona Faculty Affiliates (TERRACE)

4:00—5:00pm MT

Offsite: Suggested Bookstore Visits

Antigone Books

(411 N 4TH AVE, TUCSON, AZ 85705)

The University of Arizona Bookstore

(1209 E UNIVERSITY BLVD, TUCSON, AZ 85721, LOCATED ON CAMPUS IN THE UA STUDENT UNION)

→**Special Event** 7:00—9:00pm MT

Declamación, hosted by Clyde Moneyhun (TERRACE)
Cash bar available

Sunday, November 14

Offsite: Things to Do In and Around Tucson, Guided and On-Your-Own